



# Nimbra Vision

Advanced Media Networking Management for  
Net Insight products

The Nimbra Vision NMS completes the Nimbra multiservice network by offering easy and cost-efficient network operations for demanding applications and services.

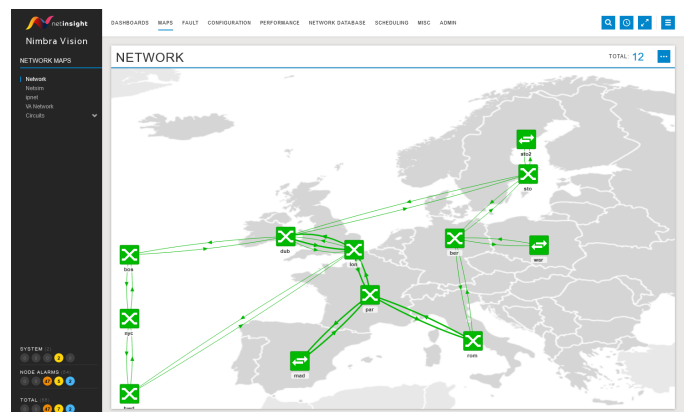
Nimbra Vision is a comprehensive network management tool providing a superior overview of the operation of a Nimbra/Aperi network. With Nimbra Vision, the operator has control over every activity inside the network. A centralized network view is key for keeping operating costs to a minimum. Nimbra Vision continuously monitors the network for faults and performance degradation and presents the network status in a graphical user-friendly interface.

## Easy, powerful provisioning

A Nimbra network is unique in its ability to control and manage each individual service on an end-to-end basis. To make the most out of this capability of the network, Net Insight's approach to network management is service-centric. Using Nimbra Vision, the provisioning task is easily performed with full graphical support using the topological network map or by third party systems using northbound REST API.

## Scheduling and booking

Nimbra Vision supports scheduling and booking of services with resource reservation. The Scheduling and Booking can be performed directly in Nimbra Vision or by 3rd party orchestration systems through the northbound REST API. It also supports auto-route for unicast, multicast and 1+1 protection, and where made reservations are considered.



## Advanced monitoring

Performance Monitoring is performed in real time and continuously per service, per trunk and on the incoming signal. This offers an instant overview of the performance of all services and the underlying network. This information can be aggregated and consolidated over both time and topology to generate reports for SLA follow up both against customers and capacity provider. The performance information can generate alarms for immediate and preventive actions in degraded performance.

## Flexible protection

Service protection is easily configured per individual service to provide the expected level of resiliency, whether it is a prioritized list of paths through the network, any flavor of 1+1 protection, or disaster recovery such as head-end protection.



# Key features

## Intuitive Web Management

Nimbra Vision includes a powerful and yet intuitive web interface that lets you control the full range of Nimbra Vision functionality.

## Auto-discovery of devices

Nimbra Vision automatically discovers most information related to installed nodes such as topologies, interfaces and ports, services and configuration.

## Topological device maps

Nodes and links are presented in a dynamic topological map of physical and logical topologies including services.

## Pre-emption

In network failure situations or at service provisioning, Nimbra Vision may allow high-priority services to be established or rerouted by pre-empting low-priority services.

## Head-End Protection

Redundancy of Nimbra headend nodes is enabled by configuring primary and secondary connections. Nimbra Vision will activate the secondary connection in case of signal or node failure.

## Service Provisioning

Easy end-to-end provisioning of services by selecting the originating and terminating nodes from the map. Manageservices with based on easy to use service templates.

## Scheduling and booking

Scheduling and booking for provisioning of services for occasional use services including resource reservation.

## REST API for Service provisioning

A northbound REST API allows integration with 3rd party scheduling and booking systems for provisioning of services.

## Performance Monitoring

Collects PM on trunks, access ports and services reports from the network elements. Also collects statistics, including trunk utilization, bitrate, counters and other values. It is also possible to generate alarms on thresholds.

# Technical specifications

## Web Client

**Browser** Edge (Chromium), Chrome, Firefox, Safari

## Nimbra Vision Server

**Operating System** Windows Server 2012R2, 2016, 2019, Windows 10

## Ordering Information

**NPK0003-S002** Nimbra Vision SDN Controller

**NPM0058-0001** Nimbra Vision Visualization Feature License

**NPM0003-SP01** Nimbra Vision Service Provisioning License

**NPM0003-HP01** Nimbra Vision Headend Protection License

**NPM0003-PRE1** Nimbra Vision Pre-emption License

**NPK0003-RS02** Nimbra Vision Redundant Server License

**NPM00003-SH01** Nimbra Vision Scheduling

**NPM00003-AR01** Nimbra Vision Auto-Route

**NPM0003-DS01**

**NPM0004-0001**

**NPM0003-SU01**

**NPM0003-PIN1**

**NPM0056-0001**

**NPM0057-0001**

**NPK0035-0001**

**NPK0036-0001**

**NPM0003-C301**

**NPM0003-C301**

**NPM0003-C601**

**NPM0003-C641**

**NPM0003-NM01**

**NPM0003-C130**

**NPM0003-C140**

**NPM0003-C230**

**NPM0003-VA01**

**NPM0003-OT01**

**NPM0003-3P01**

**NPM0003-AP01**

**NPM00003-AR01**

Nimbra Vision SDN Controller Frontend License

Nimbra Vision Installation and Documentation CD

Nimbra Vision Upgrade License

Nimbra Vision Northbound Provisioning Interface License

Nimbra Vision Web Client Feature License

Nimbra Vision Performance Monitoring Feature

Nimbra Vision CPN Bundle

Nimbra Vision NMS Provisioning Bundle Node Licenses

Nimbra Vision Node License, Nimbra 300

Nimbra Vision Node License, Nimbra 300

Nimbra Vision Node License, Nimbra 68x

Nimbra Vision Node License, Nimbra 640

Nimbra Vision Node License, Nimbra Media GW

Nimbra Vision Node License, Nimbra 130

Nimbra Vision Node License, Nimbra 140

Nimbra Vision Node License, Nimbra 230

Nimbra Vision Node License, Nimbra VA

Nimbra Vision Node License, Nimbra OT 100

Nimbra Vision Node License, 3rd party node

Nimbra Vision Node License, Aperi CSP

Nimbra Vision Auto-Route

## Net Insight AB (publ)

Phone +46 (0)8 685 04 00, [info@netinsight.net](mailto:info@netinsight.net), [www.netinsight.net](http://www.netinsight.net)

The information presented in this document may be subject to change without notice. For further information on product status and availability, please contact [info@netinsight.net](mailto:info@netinsight.net) or visit [www.netinsight.net](http://www.netinsight.net)

©Copyright 2021, Net Insight AB, Sweden. All rights reserved. Net Insight and Nimbra are trademarks of NetInsight AB, Sweden. All other registered trademarks are the property of their respective owners.

